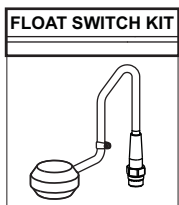
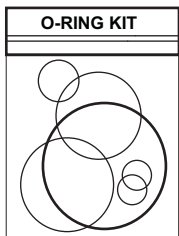
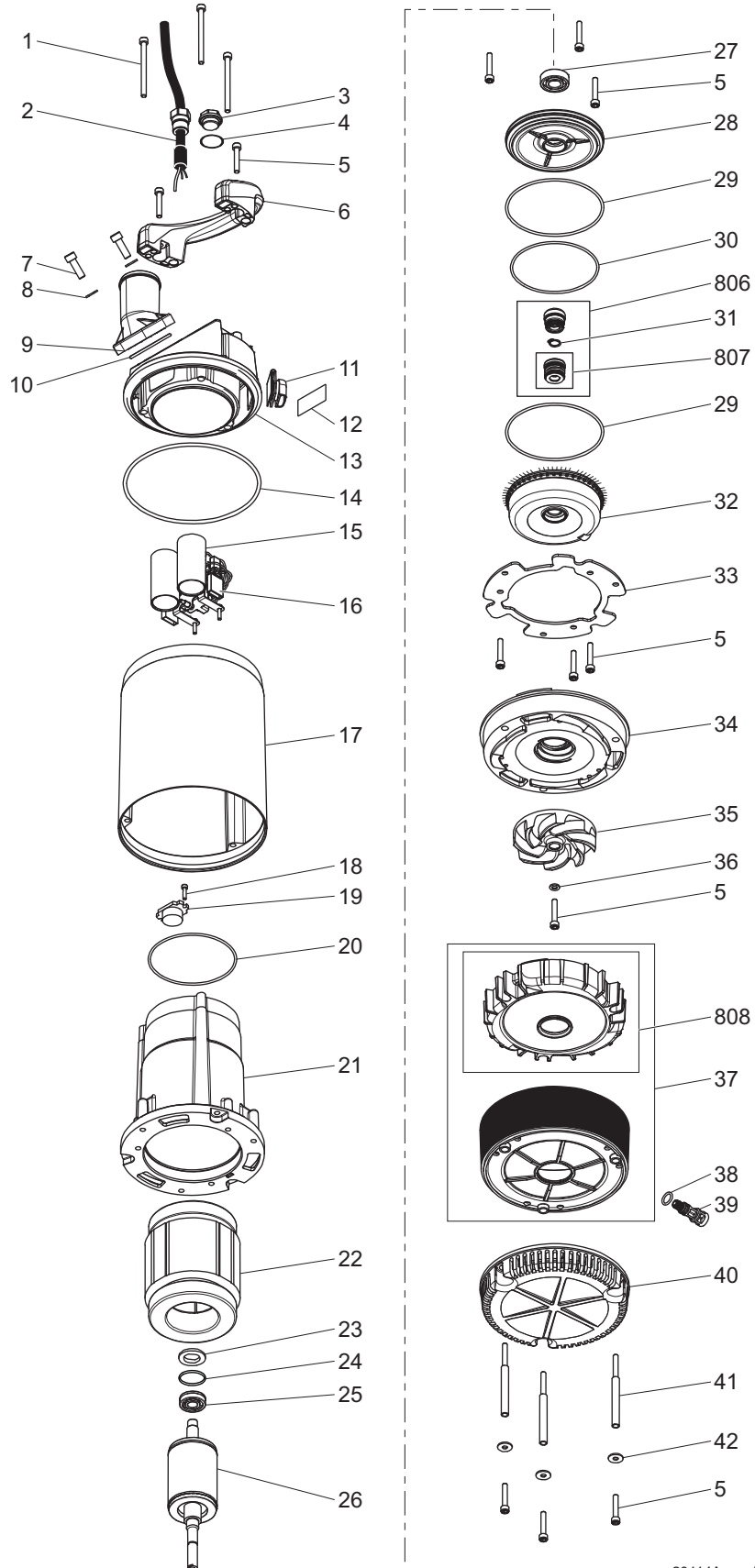


# Parts List



www.grindex.com

## MINI 8122.211





# Parts List

MINI 8122.211

## Overview

---

### Table of Contents

This publication contains the following topics:

### Topic

Introduction .....	4
Practical Information .....	5
Data plate interpretation .....	6
Order parts .....	7
Spare Parts .....	8

---

# Introduction

## Purpose

The purpose of this manual is to give the reader information about available spare parts and accessories for the product.

---

## Recipient

The manual is principally intended for Grindex

- customers
  - service personnel
  - sales personnel
- 

## Contact

For more information

- contact your Grindex representative
  - visit <http://www.grindex.com/>
- 

## Reference

More information about the product is available in the following documents:

- Installation, Operation and Maintenance
  - Grindex accessories list
-

# Practical Information

## Overview

### Table of Contents

---

This chapter contains the following topics:

#### Topic

Data plate interpretation .....	6
Data plate .....	6
Order parts .....	7

---

# Data plate interpretation

## Introduction

The Grindex product is always provided with data plates:

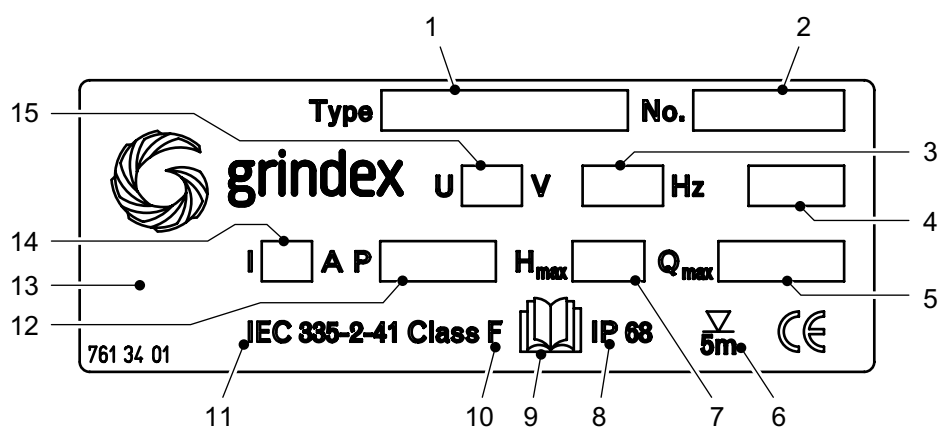
- The general data plate is used on all products.
- The approval plate is added to all explosion proof products.

## Data plate

The product may only be operated within the parameters stated on the data plate.

## Illustration

This is an illustration of a general data plate.



## Field description

This table shows the fields on the general data plate, and which information each field contains.

Field	Description	Field	Description
1	Pump model	9	Read installation manual
2	Serial number	10	Thermal class
3	Phase; type of current; frequency	11	International standard
4	Product weight	12	Rated shaft power
5	Maximum capacity	13	Country of origin
6	Maximum submergence	14	Rated current
7	Maximum head	15	Rated voltage
8	Degree of protection	-	-

## Order parts

---

### Order

When ordering spare parts, state product number and serial number of the product, spare part number and quantity.

---

### Requirements

Genuine Grindex parts must always be used for repairs if the product is to fulfill requirements and obtain official approval.

---

### Specially Approved Products

Spare parts marked with (EX) after the part number are subject to dimensional accuracy inspection.

---

## Spare Parts

Pos. No	Part. No	Denomination	Qty/Version	
			211	
1	410 777	Hex.socket hd screw M6X80-A2-70	3	
2	51 649 00	Motor cable unit 532.1U+H07RN-F 3X1 MM2	1	
2	51 649 01	Motor cable unit SOOW-16AWG/3 115V USA CDN	1	
2	51 649 02	Motor cable unit H07RN-F 3X1 MM2 230V GB	1	
2	51 649 03	Motor cable unit H07RN-F 3X1 MM2 230V AUS	1	
2	51 649 04	Motor cable unit H07RN-F 3X1 MM2 110V GB	1	
2	51 649 05	Motor cable unit SOW-16AWG/3 230V USA CDN	1	
2	51 649 06	Motor cable unit H07RN-F 3X1 MM2 CH	1	
3	51 650 00	Plug	1	
4	410 778	O-ring 20.0X2.0 NBR	1	
5	410 757	Hex.socket hd screw M6X35-A2-70	12	
6	51 651 00	Handle	1	
7	50 021 00	Hex.socket hd screw M8X25-A2-70	2	
8	132 289	Plain washer 8-A2-A-170	2	
9	410 027	Coupling part DN 52 INNER G2B STORZ	1	
9	50 839 00	Discharge connection 2"	1	
9	50 839 01	Discharge connection NPSM 2"	1	
9	50 839 02	Discharge connection G2"	1	
10	50 037 52	O-ring 52.5X3.0 NBR	1	
12	51 652 00	Data plate	1	
13	51 653 00	Cover unit	1	
14	130 944	O-ring 149.3X5.7 NBR	1	
15	50 893 01	Capacitor 14 MFD 450V	1	
15	50 893 02	Capacitor 30 MFD 275V	1	
15	50 893 03	Capacitor 35 MFD 275V	1	
15	51 662 00	Starter unit	1	
16	410 780	Terminal device 48X12X6 MAX.380V 18A	1	



Pos. No	Part. No	Denomination	Qty/Version	
			211	
16	410 781	Terminal device 54X21X8.5 MAX.380V 18A	1	
17	51 655 00	Cooling jacket	1	
18	410 008	Hex.socket hd screw M4X16-A2-70	1	
19	50 844 04	Motor switch 115V 50HZ	1	
19	50 844 05	Motor switch 230V 50HZ	1	
19	50 844 06	Motor switch 115V 60HZ	1	
19	50 844 07	Motor switch 230V 60HZ	1	
20	132 017	O-ring 99.5X3.0 NBR	1	
21	51 654 00	Stator housing	1	
22	50 780 00	Stator 12-08-2b	1	115V.
22	50 780 01	Stator 12-08-2b	1	230V - 240V.
23	50 452 00	Spring washer 31.5X25X0.35	1	
24	50 037 35	O-ring 26.0X1.2 NBR	1	
25	50 287 02	Ball bearing 12X32X10	1	
26	51 656 01	Shaft unit	1	
27	50 287 01	Ball bearing 15X35X11	1	
28	51 657 00	Bearing housing	1	
29	50 037 38	O-ring 114.5X3.0 NBR	2	
30	50 037 02	O-ring 104.5X3.0 NBR	1	
31	50 453 00	Retaining ring	1	
32	50 443 00	Oil housing	1	
33	51 658 00	Washer	1	
34	50 447 00	Wear protection	1	
35	50 436 00	Impeller	1	50Hz: 230V, 240V.
35	50 436 02	Torque flow impeller	1	50Hz: 115V.
35	51 659 10	Torque flow impeller	1	60 Hz.
36	50 020 05	Plain washer	1	
37	50 896 00	Diffuser unit	1	
38	50 037 34	O-ring 10.3X2.4 NBR	1	
39	50 445 00	Inspection screw	1	
40	50 440 00	Strainer	1	
41	51 660 00	Barrel nut	3	
42	50 020 06	Plain washer 9021-6,4X18X1,6	3	
800	51 663 00	O-ring kit	1	
900	51 664 00	Basic repair kit	1	
910	51 665 00	Float switch kit	1	



Grindex AB • Box 7025 • SE-174 07 Sundbyberg • Sweden • Tel +46 8 606 66 00 • Fax +46 8 745 53 28 • [marketing@grindex.com](mailto:marketing@grindex.com)

*© Grindex AB. The original instruction is in English. All non-English instructions are translations of the original instruction.*